



Universitat
de les Illes Balears



**Fundació
Universitat
Empresa**
de les Illes Balears

UIBCongrés

BID TO HOST



EMCA 2023

Mallorca

a Mediterranean proposal for the
XI International EMCA Conference





Dr. Carlos Barceló

Associate Professor of Zoology at the University of the Balearic Islands since 2016



Dr. Miguel Ángel Miranda

Full Professor of Zoology at the University of the Balearic Islands since 1995



Universitat
de les Illes Balears



Applied Zoology and Animal
Conservation Research Group



Universitat
de les Illes Balears

Mallorca (Balearic Islands, Spain)

The Balearic Islands at a glance

- The **Balearic Islands** is a privileged archipelago located in the west part of the Mediterranean basin
- From ancient time the archipelago has been a place of encounter of different cultures.
- **Topography** makes special array of landscapes and colors. Mallorca is trend, nature, gastronomy, business, sailing, light and warmth.
- Unique in every sense.
- Singular and once-in-a-lifetime.



The archipelago is composed by the islands of **Mallorca**, **Menorca**, **Ibiza** and **Formentera**, as well the **Cabrera**, archipelago that constitutes the largest Maritime-Terrestrial National in Spain and the West Mediterranean.



Why the Balearic Islands: treasure of nature

UNESCO World Heritage: Serra de Tramuntana & *Posidonia oceanica*
Menorca Biosphere Reserve
Sea-Land National Park of Cabrera

ENDEMIC SPECIES:

300+ animal sp.

- Insects (carabidae and tenebrionidae beetles)
- Mollusks (*Iberellus* and *Xerocrassa* sp., *Tudorella ferruginea*, *Allognathus graellsianus* Terrestrial snails)
- Cave crustaceans and arachnids
- Amphibians (*Alytes muletensis* - ferreret)
- Reptiles (*Podarcis lilfordi* and *pityusensis* – lizards, 20+ subspecies each)
- Birds (*Puffinus mauretanicus*, *Sylvia balearica* and several subspecies)
- Mammals (*Elyomis quercinus ophisuae* – dormouse from Formentera)

170 + plant sp. And ssp.

- Subshrubs
- *Limonium* sp.
- *Paeonia cambessedessi*
- *Daphne rodriguezii*...

THREATS:

- Human pressure
- Invasive sp.



Climate

Typical **Mediterranean climate** all through the year.

Winters are mild and summers hot

314 days of sun year round.

Daily average (a.s.l.) T°:

- 9 °C/11 °C (48 °F/52 °F) in January and February
- 24/24.5 °C (75/76 °F) in July and August.

Rainfall:

- Generally not abundant, 400/450 mm (15.5/17.5 in) per year on the coast.



Hospitality and Culture

Palma

- Top touristic city in Europe
- Wide offer of accommodation and a thrilling cultural activity.
- Modern cosmopolitan city with a wealth of things to do
- Any visit to the city should include a tour of its most important historical buildings and its artistic heritage.
- Historic Palma boasts patios, outstanding religious architecture and iconic buildings as well as museums and art galleries.
- Its artistic and cultural content deserves being well known and will surprise anyone who has traditionally thought of Palma just as a sun and sand destination.



Gastronomy

In a city bathed by the Mediterranean like Palma, you have to try the excellent local gastronomy. Traditional recipes prepared on a daily basis with the finest produce that the land and sea have to offer have given rise to popular dishes like “tumbet” and “frit”, amongst others. You will find over 1000 restaurants offering a wide range of cuisines from all over the world. Palma de Mallorca is also the chosen location for great international chefs, whose restaurants offer the most innovative and creative recipes.

Photo: Marta Simonet



Photo: Rafel Balaguer

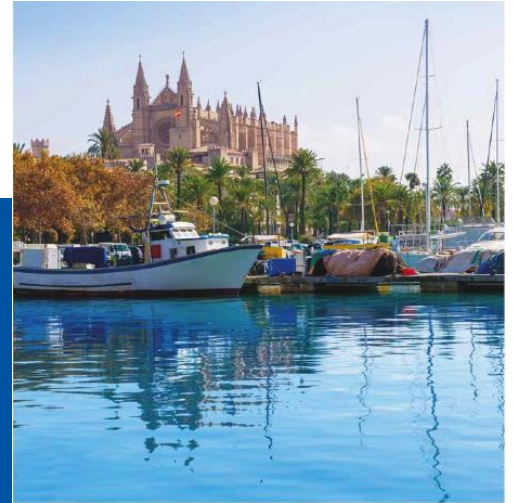


Accommodation

Hotels are on average of high quality and with a wide variety of rates.
Availability is assured all year in Palma, even though early bookings are recommended.

In November the rates are lower than in high season (April-September)

Mallorca Convention Bureau photo



Connection

Flying is almost certainly the quickest and most convenient method of travel to the island of Mallorca.

- There's a wide choice of airlines which offer flights at competitive prices.
- The airport of Palma is the third airport in Spain in number of flights after Madrid and Barcelona.
- It is well connected to the main cities in Europe, which allow an easy connection via main airports in Europe and the rest of the world.



71

OPERATING AIRLINES



30

COUNTRIES



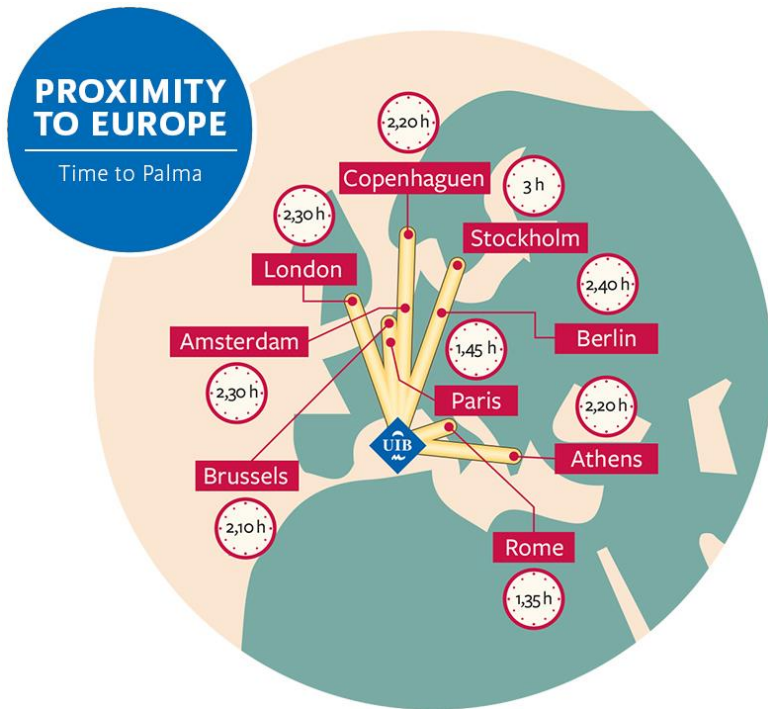
44

ROUTES



174

DESTINATIONS



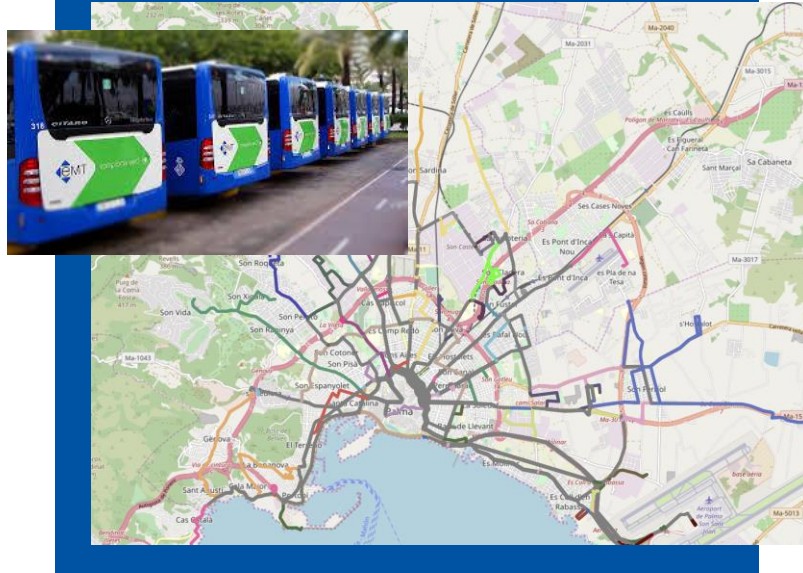
Bus and metro network

The EMT is in charge of offering the bus service in Palma (31 lines).

The TIB offer the connections with other municipalities of the island

Metro: 15 min from the city center (Plaza de España) to the UIB

The promotion of the bus and metro as a means of transport to the city allows to improve the mobility of the traffic and to reduce the congestion in all the city.



[Bus routes](#)
[Metro routes](#)

Experienced organizers:

The research group on **Applied Zoology and Animal Conservation** has organized:



7th S O V E
International Congress



International meetings:

Tephritid Workers of Europe Africa and the Middle East

Palma (Mallorca) from 7th to 8th April 2008 · **150 participants**

7th International Congress of the Society for Vector Ecology

Palma (Mallorca) from 1st to 6th October 2017 · **330 participants**

European conference on Xylella fastidiosa: finding answers to a global problem

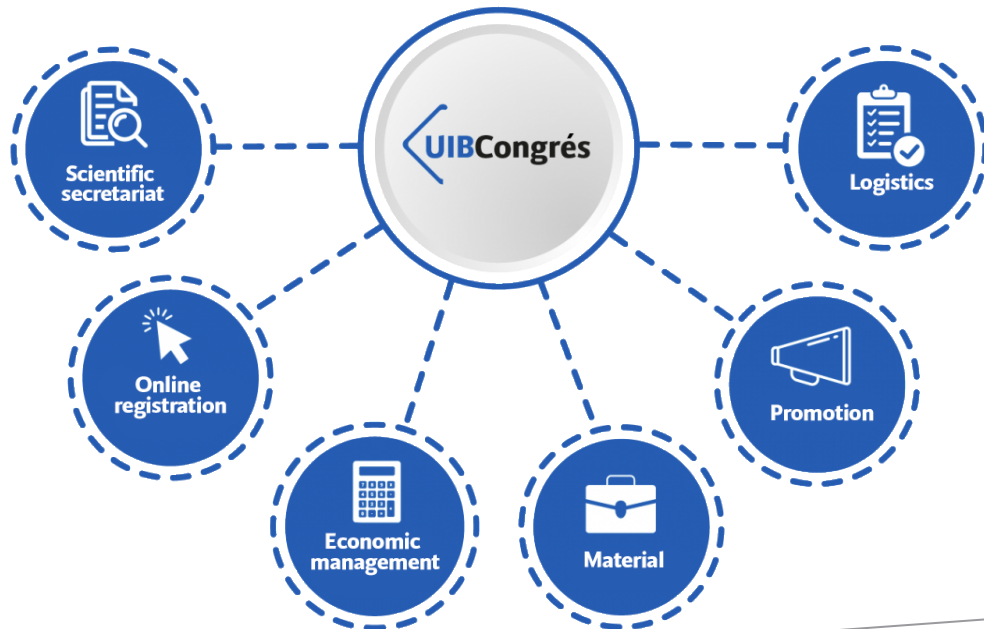
Palma (Mallorca) from 13th to 15th November 2017 · **150 participants**

National meeting.

VI Congreso Nacional de Entomología Aplicada XII Jornadas Científicas de la SEEA

Palma (Mallorca) from 19th to 23th October 2009 · **225 participants**

The group at the University of the Balearic Island (UIB) has a good experience in organizing meetings. We offer also the guarantee of organizing the meeting with professional staff from the UIBCongrés department, also with a long experience in organizing meetings, of which **111 have been international congresses**.





Universitat de les Illes Balears

The Campus is located in a rural environment.

It occupies almost 100 hectares,

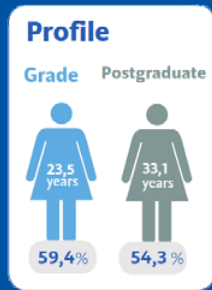
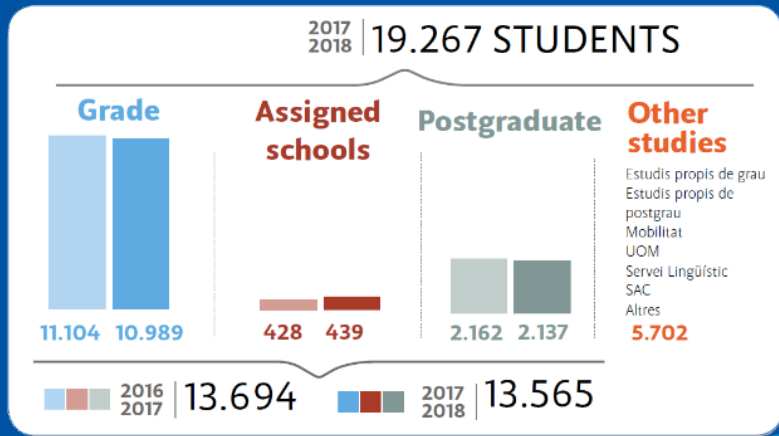
52 correspond to natural reserve. It includes, in its NO limit, a part of the Special Interest Area (ANEI) known as Foothills of the Sierra de Tramuntana.

The terrain is not very accidental, in spite of the trough corresponding to the old raft of the humid zone of the Font de la Vila, where we will find the minimum level (80 m); The area occupied by the teaching equipment is flat and the rural area has a slight slope from the maximum height (107 m) of the NW end of the campus to the so-called wet zone.

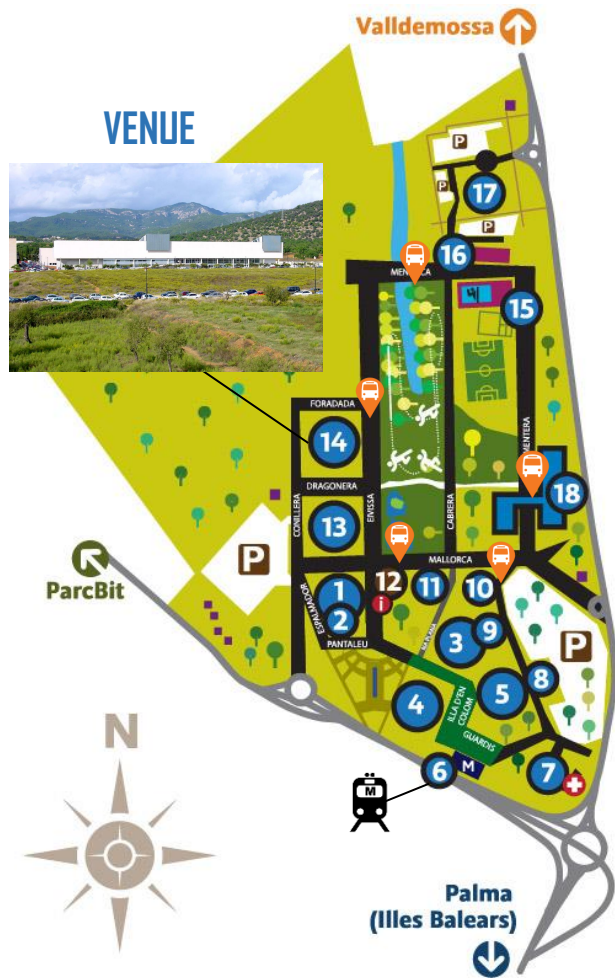



The University of the Balearic Islands.

The campus of the UIB began in 1983 on land adjacent to the road Valldemosa between former possessions of Cas Jai and Son Lledó, in the municipality of Palma. The University of the Balearic Island has a strong commitment to serve society, is a modern university and open to the world.



Universitat
de les Illes Balears



1. Anselm Turmeda building
2. CTI - Oficina Web
3. Guillem Colom Casanovas building
4. Ramón Lull building
5. Mateu Orfila y Rotger building
6. Metro Station 
7. Cas Jai building
8. Scientific and technical services of university institutes
9. Scientific and technical services of university institutes
10. Antoni Maria Alcover i Sureda building
11. Beatriu de Pinós building
12. Campus Bookstore
13. Guillem Cifre de Colonya building
- 14. VENUE: Gaspar Melchor de Jovellanos building**
15. Sports facilities
16. Student's residence. Bartomeu Rosselló-Pòrcel building
17. Escola d'Hoteleria de les Illes Balears Ehib
18. Son Lledó building



Bus stop



The venue: Gaspar Melchor de Jovellanos (UIB)



The building was inaugurated in 2004

Faculty of law
Faculty of Economics

Business and administration degree
Law degree
Tourism degree
Labor relations degree

Master degrees

Proposed dates:

From 7th to 10th November 2023

Spaces

Auditori:

Work meetings, congresses, conferences, meetings and presentations.

Classic and elegant decoration, while comfortable, allows total comfort to the people gathered there.

Capacity: 240 people in a public area and a maximum of 7 at the presidential table.

Classrooms :

Wide and very luminous rooms destined to meetings of work, press conferences, exhibition of projects, presentations, etc.

Capacity: 50 people

Restaurant and cafeteria



Concerned about the environment

To achieve this purpose we will carry out the following actions:

- Digital documents:
 - ✓ Programme / Handbook
 - ✓ Maps / tourist information
 - ✓ Proceedings
- Sending digital certificates
- Carbon footprint compensation with local actions
- Streaming service for remote delegates



www.uib.cat